

## 2,4-Dihydroxybenzaldehyde 4-methylthiosemicarbazone

Kong Wai Tan,<sup>a</sup> Chew Hee Ng,<sup>b</sup> Mohd. Jamil Maah<sup>a\*</sup> and Seik Weng Ng<sup>a</sup>

<sup>a</sup>Department of Chemistry, University of Malaya, 50603 Kuala Lumpur, Malaysia, and <sup>b</sup>Faculty of Engineering and Science, Universiti Tunku Abdul Rahman, 53300 Kuala Lumpur, Malaysia

Correspondence e-mail: mjamil@um.edu.my

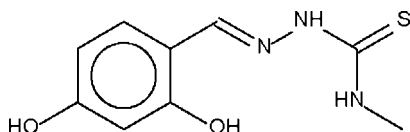
Received 11 October 2008; accepted 14 October 2008

Key indicators: single-crystal X-ray study;  $T = 100$  K; mean  $\sigma(\text{C}-\text{C}) = 0.004$  Å;  $R$  factor = 0.038;  $wR$  factor = 0.109; data-to-parameter ratio = 13.9.

The approximately planar molecule of the title compound,  $\text{C}_9\text{H}_{11}\text{N}_3\text{O}_2\text{S}$ , is linked to adjacent molecules by  $\text{O}-\text{H}\cdots\text{S}$  hydrogen bonds to form a zigzag chain. Adjacent chains are consolidated by  $\text{N}-\text{H}\cdots\text{O}$  hydrogen bonds into a two-dimensional array. An intramolecular  $\text{O}-\text{H}\cdots\text{N}$  link is also present.

### Related literature

For the structure of isomeric 2,5-dihydroxybenzaldehyde 4-methylthiosemicarbazone, see: Tan *et al.* (2008).



### Experimental

#### Crystal data

$\text{C}_9\text{H}_{11}\text{N}_3\text{O}_2\text{S}$

$M_r = 225.27$

Monoclinic,  $Cc$

$a = 18.0046$  (6) Å

$b = 4.6436$  (1) Å

$c = 12.2842$  (4) Å

$\beta = 106.695$  (2)°

$V = 983.74$  (5) Å<sup>3</sup>

$Z = 4$

Mo  $K\alpha$  radiation

$\mu = 0.31$  mm<sup>-1</sup>

$T = 100$  (2) K

$0.09 \times 0.06 \times 0.03$  mm

#### Data collection

Bruker SMART APEX

diffractometer

Absorption correction: multi-scan

(*SADABS*; Sheldrick, 1996)

$T_{\min} = 0.973$ ,  $T_{\max} = 0.991$

4390 measured reflections

2128 independent reflections

1925 reflections with  $I > 2\sigma(I)$

$R_{\text{int}} = 0.034$

#### Refinement

$R[F^2 > 2\sigma(F^2)] = 0.038$

$wR(F^2) = 0.109$

$S = 1.11$

2128 reflections

153 parameters

6 restraints

H atoms treated by a mixture of independent and constrained refinement

$\Delta\rho_{\text{max}} = 0.31$  e Å<sup>-3</sup>

$\Delta\rho_{\text{min}} = -0.22$  e Å<sup>-3</sup>

Absolute structure: Flack (1983),

with 814 Friedel pairs

Flack parameter: 0.00 (1)

**Table 1**

Hydrogen-bond geometry (Å, °).

$D-H\cdots A$	$D-H$	$H\cdots A$	$D\cdots A$	$D-H\cdots A$
$\text{O1}-\text{H1O}\cdots\text{N1}$	0.84 (1)	1.93 (3)	2.694 (3)	151 (6)
$\text{O2}-\text{H2O}\cdots\text{S1}^{\text{i}}$	0.84 (1)	2.54 (1)	3.365 (2)	170 (4)
$\text{N2}-\text{H2N}\cdots\text{O1}^{\text{ii}}$	0.87 (1)	2.11 (1)	2.950 (4)	162 (3)

Symmetry codes: (i)  $x + \frac{1}{2}, -y - \frac{1}{2}, z + \frac{1}{2}$ ; (ii)  $x, -y, z - \frac{1}{2}$ .

Data collection: *APEX2* (Bruker, 2007); cell refinement: *SAINTE* (Bruker, 2007); data reduction: *SAINTE*; program(s) used to solve structure: *SHELXS97* (Sheldrick, 2008); program(s) used to refine structure: *SHELXL97* (Sheldrick, 2008); molecular graphics: *X-SEED* (Barbour, 2001); software used to prepare material for publication: *pubCIF* (Westrip, 2008).

We thank the University of Malaya (PJP FS316/2008 C) for supporting this study. KWT thanks the Ministry of Higher Education for an SLAI scholarship.

Supplementary data and figures for this paper are available from the IUCr electronic archives (Reference: TK2316).

### References

- Barbour, L. J. (2001). *J. Supramol. Chem.* **1**, 189–191.  
 Bruker (2007). *APEX2* and *SAINTE*. Bruker AXS Inc., Madison, Wisconsin, USA.  
 Flack, H. D. (1983). *Acta Cryst.* **A39**, 876–881.  
 Sheldrick, G. M. (1996). *SADABS*. University of Göttingen, Germany.  
 Sheldrick, G. M. (2008). *Acta Cryst.* **A64**, 112–122.  
 Tan, K. W., Ng, C. H., Maah, M. J. & Ng, S. W. (2008). *Acta Cryst.* **E64**, o1344.  
 Westrip, S. P. (2008). *pubCIF*. In preparation.

**supplementary materials**

*Acta Cryst.* (2008). E64, o2224 [ doi:10.1107/S1600536808033308 ]

## 2,4-Dihydroxybenzaldehyde 4-methylthiosemicarbazone

K. W. Tan, C. H. Ng, M. J. Maah and S. W. Ng

### Comment

In continuation of on-going studies into the structural chemistry of thiosemicarbazones (Tan *et al.*, 2008), the title compound (I) was investigated. Molecule (I), Fig. 1, is essentially planar and is consolidated into a 2-D array by a combination of N-H $\cdots$ O and O-H $\cdots$ S hydrogen bonding contacts, Table 1.

### Experimental

4-Methylthiosemicarbazide (0.11 g, 1 mmol) and 2,4-dihydroxybenzaldehyde (0.14 g, 1 mmol) were heated in ethanol (10 ml) for 1 h. Slow evaporation of the solvent yielded yellow crystals.

### Refinement

Carbon-bound H-atoms were placed in calculated positions (C—H 0.95 to 0.98 Å) and were included in the refinement in the riding model approximation, with  $U_{\text{iso}}(\text{H})$  set to 1.2–1.5  $U_{\text{eq}}(\text{C})$ . The hydroxy and amino H-atoms were located in a difference Fourier map, and were refined with distance restraints of O—H = 0.84±0.01 and N—H = 0.88±0.01 Å; their temperature factors were freely refined.

### Figures

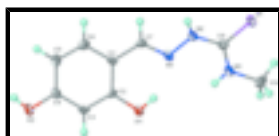


Fig. 1. Thermal ellipsoid (Barbour, 2001) plot of (I) drawn at the 70% probability level. Hydrogen atoms are drawn as spheres of arbitrary radii.

## 2,4-Dihydroxybenzaldehyde 4-methylthiosemicarbazone

### Crystal data

$\text{C}_9\text{H}_{11}\text{N}_3\text{O}_2\text{S}$

$M_r = 225.27$

Monoclinic,  $Cc$

Hall symbol: C -2yc

$a = 18.0046$  (6) Å

$b = 4.6436$  (1) Å

$c = 12.2842$  (4) Å

$\beta = 106.695$  (2)°

$V = 983.74$  (5) Å<sup>3</sup>

$F_{000} = 472$

$D_x = 1.521$  Mg m<sup>-3</sup>

Mo  $K\alpha$  radiation

$\lambda = 0.71073$  Å

Cell parameters from 1090 reflections

$\theta = 2.4$ – $24.9$ °

$\mu = 0.31$  mm<sup>-1</sup>

$T = 100$  (2) K

Prisms, yellow

$0.09 \times 0.06 \times 0.03$  mm

# supplementary materials

---

Z = 4

## Data collection

Bruker SMART APEX diffractometer	2128 independent reflections
Radiation source: fine-focus sealed tube	1925 reflections with $I > 2\sigma(I)$
Monochromator: graphite	$R_{\text{int}} = 0.034$
$T = 100(2)$ K	$\theta_{\text{max}} = 27.5^\circ$
$\omega$ scans	$\theta_{\text{min}} = 2.4^\circ$
Absorption correction: Multi-scan (SADABS; Sheldrick, 1996)	$h = -23 \rightarrow 22$
$T_{\text{min}} = 0.973$ , $T_{\text{max}} = 0.991$	$k = -6 \rightarrow 6$
4390 measured reflections	$l = -15 \rightarrow 15$

## Refinement

Refinement on $F^2$	Hydrogen site location: inferred from neighbouring sites
Least-squares matrix: full	H atoms treated by a mixture of independent and constrained refinement
$R[F^2 > 2\sigma(F^2)] = 0.038$	$w = 1/[\sigma^2(F_o^2) + (0.0598P)^2]$ where $P = (F_o^2 + 2F_c^2)/3$
$wR(F^2) = 0.109$	$(\Delta/\sigma)_{\text{max}} = 0.001$
$S = 1.11$	$\Delta\rho_{\text{max}} = 0.31 \text{ e } \text{\AA}^{-3}$
2128 reflections	$\Delta\rho_{\text{min}} = -0.22 \text{ e } \text{\AA}^{-3}$
153 parameters	Extinction correction: none
6 restraints	Absolute structure: Flack (1983), 814 Friedel pairs
Primary atom site location: structure-invariant direct methods	Flack parameter: 0.00 (1)
Secondary atom site location: difference Fourier map	

## Special details

**Geometry.** All e.s.d.'s (except the e.s.d. in the dihedral angle between two l.s. planes) are estimated using the full covariance matrix. The cell e.s.d.'s are taken into account individually in the estimation of e.s.d.'s in distances, angles and torsion angles; correlations between e.s.d.'s in cell parameters are only used when they are defined by crystal symmetry. An approximate (isotropic) treatment of cell e.s.d.'s is used for estimating e.s.d.'s involving l.s. planes.

## Fractional atomic coordinates and isotropic or equivalent isotropic displacement parameters ( $\text{\AA}^2$ )

	x	y	z	$U_{\text{iso}}^*/U_{\text{eq}}$
S1	0.50003 (5)	0.63599 (16)	0.50001 (6)	0.01776 (19)
O1	0.65168 (12)	-0.1181 (5)	0.93136 (19)	0.0174 (5)
O2	0.84529 (13)	-0.8242 (5)	1.05294 (19)	0.0198 (5)
N1	0.63927 (15)	0.1424 (5)	0.7309 (2)	0.0144 (5)
N2	0.60440 (15)	0.2962 (6)	0.6322 (2)	0.0147 (5)
N3	0.53164 (15)	0.5567 (6)	0.7241 (2)	0.0166 (6)

C1	0.73692 (17)	-0.2114 (7)	0.8141 (2)	0.0128 (6)
C2	0.71210 (17)	-0.2660 (7)	0.9113 (2)	0.0122 (6)
C3	0.74812 (18)	-0.4725 (7)	0.9891 (3)	0.0141 (6)
H3	0.7300	-0.5117	1.0530	0.017*
C4	0.81112 (16)	-0.6232 (6)	0.9739 (2)	0.0142 (6)
C5	0.83798 (18)	-0.5674 (7)	0.8800 (3)	0.0174 (7)
H5	0.8815	-0.6688	0.8704	0.021*
C6	0.80096 (17)	-0.3645 (7)	0.8017 (3)	0.0159 (7)
H6	0.8192	-0.3274	0.7378	0.019*
C7	0.69685 (17)	-0.0131 (7)	0.7250 (2)	0.0142 (6)
H7	0.7142	0.0020	0.6590	0.017*
C8	0.54711 (17)	0.4887 (7)	0.6279 (3)	0.0149 (6)
C9	0.47552 (19)	0.7743 (8)	0.7317 (3)	0.0206 (7)
H9A	0.4879	0.8460	0.8099	0.031*
H9B	0.4234	0.6899	0.7100	0.031*
H9C	0.4773	0.9340	0.6804	0.031*
H10	0.633 (3)	-0.017 (11)	0.874 (3)	0.08 (2)*
H2O	0.8796 (19)	-0.909 (8)	1.032 (4)	0.038 (13)*
H2N	0.6097 (19)	0.218 (7)	0.5703 (17)	0.011 (8)*
H3N	0.5552 (19)	0.476 (7)	0.7898 (17)	0.018 (9)*

Atomic displacement parameters ( $\text{\AA}^2$ )

	$U^{11}$	$U^{22}$	$U^{33}$	$U^{12}$	$U^{13}$	$U^{23}$
S1	0.0196 (4)	0.0180 (4)	0.0138 (3)	0.0027 (4)	0.0018 (3)	0.0021 (4)
O1	0.0193 (13)	0.0174 (12)	0.0159 (11)	0.0038 (9)	0.0059 (9)	0.0029 (10)
O2	0.0216 (12)	0.0196 (13)	0.0171 (12)	0.0069 (10)	0.0037 (9)	0.0040 (9)
N1	0.0159 (13)	0.0126 (13)	0.0125 (12)	-0.0018 (11)	0.0008 (10)	0.0013 (10)
N2	0.0176 (13)	0.0163 (13)	0.0097 (13)	0.0024 (11)	0.0030 (10)	-0.0001 (11)
N3	0.0195 (14)	0.0144 (13)	0.0152 (13)	0.0023 (11)	0.0037 (10)	0.0014 (10)
C1	0.0153 (14)	0.0135 (15)	0.0103 (14)	-0.0029 (12)	0.0048 (11)	-0.0005 (12)
C2	0.0105 (14)	0.0147 (15)	0.0129 (15)	-0.0017 (12)	0.0056 (11)	-0.0034 (12)
C3	0.0162 (15)	0.0159 (16)	0.0120 (15)	-0.0032 (12)	0.0069 (12)	-0.0012 (11)
C4	0.0148 (16)	0.0139 (14)	0.0113 (14)	-0.0007 (12)	-0.0006 (12)	0.0000 (12)
C5	0.0155 (16)	0.0163 (16)	0.0180 (17)	0.0012 (12)	0.0010 (12)	-0.0031 (12)
C6	0.0121 (15)	0.0214 (18)	0.0134 (15)	-0.0031 (14)	0.0023 (12)	-0.0033 (13)
C7	0.0157 (16)	0.0164 (16)	0.0117 (15)	-0.0035 (13)	0.0058 (12)	-0.0016 (12)
C8	0.0154 (15)	0.0127 (15)	0.0175 (16)	-0.0031 (12)	0.0064 (12)	0.0002 (12)
C9	0.0169 (16)	0.0266 (19)	0.0201 (17)	0.0003 (13)	0.0079 (13)	-0.0038 (13)

Geometric parameters ( $\text{\AA}$ ,  $^\circ$ )

S1—C8	1.699 (3)	C1—C2	1.413 (4)
O1—C2	1.367 (4)	C1—C7	1.454 (4)
O1—H10	0.838 (10)	C2—C3	1.378 (4)
O2—C4	1.360 (4)	C3—C4	1.391 (4)
O2—H2O	0.836 (10)	C3—H3	0.9500
N1—C7	1.283 (4)	C4—C5	1.397 (4)
N1—N2	1.392 (3)	C5—C6	1.374 (4)

## supplementary materials

N2—C8	1.354 (4)	C5—H5	0.9500
N2—H2N	0.871 (10)	C6—H6	0.9500
N3—C8	1.328 (4)	C7—H7	0.9500
N3—C9	1.451 (4)	C9—H9A	0.9800
N3—H3N	0.880 (10)	C9—H9B	0.9800
C1—C6	1.400 (4)	C9—H9C	0.9800
C2—O1—H1O	106 (4)	C3—C4—C5	120.5 (3)
C4—O2—H2O	109 (3)	C6—C5—C4	119.5 (3)
C7—N1—N2	114.1 (3)	C6—C5—H5	120.3
C8—N2—N1	121.4 (3)	C4—C5—H5	120.3
C8—N2—H2N	121 (2)	C5—C6—C1	121.4 (3)
N1—N2—H2N	114 (2)	C5—C6—H6	119.3
C8—N3—C9	123.4 (3)	C1—C6—H6	119.3
C8—N3—H3N	123 (3)	N1—C7—C1	123.2 (3)
C9—N3—H3N	114 (3)	N1—C7—H7	118.4
C6—C1—C2	118.1 (3)	C1—C7—H7	118.4
C6—C1—C7	119.1 (3)	N3—C8—N2	118.3 (3)
C2—C1—C7	122.8 (3)	N3—C8—S1	123.4 (2)
O1—C2—C3	117.7 (3)	N2—C8—S1	118.3 (2)
O1—C2—C1	121.6 (3)	N3—C9—H9A	109.5
C3—C2—C1	120.8 (3)	N3—C9—H9B	109.5
C2—C3—C4	119.8 (3)	H9A—C9—H9B	109.5
C2—C3—H3	120.1	N3—C9—H9C	109.5
C4—C3—H3	120.1	H9A—C9—H9C	109.5
O2—C4—C3	117.9 (3)	H9B—C9—H9C	109.5
O2—C4—C5	121.6 (3)		
C7—N1—N2—C8	-174.4 (3)	C4—C5—C6—C1	0.2 (5)
C6—C1—C2—O1	177.7 (3)	C2—C1—C6—C5	1.4 (4)
C7—C1—C2—O1	-4.9 (4)	C7—C1—C6—C5	-176.0 (3)
C6—C1—C2—C3	-2.5 (4)	N2—N1—C7—C1	-174.0 (3)
C7—C1—C2—C3	174.8 (3)	C6—C1—C7—N1	-177.7 (3)
O1—C2—C3—C4	-178.3 (3)	C2—C1—C7—N1	5.0 (5)
C1—C2—C3—C4	1.9 (5)	C9—N3—C8—N2	175.6 (3)
C2—C3—C4—O2	179.7 (3)	C9—N3—C8—S1	-3.1 (4)
C2—C3—C4—C5	-0.2 (5)	N1—N2—C8—N3	8.8 (4)
O2—C4—C5—C6	179.3 (3)	N1—N2—C8—S1	-172.5 (2)
C3—C4—C5—C6	-0.9 (5)		

### Hydrogen-bond geometry ( $\text{\AA}$ , $^\circ$ )

<i>D</i> —H $\cdots$ <i>A</i>	<i>D</i> —H	H $\cdots$ <i>A</i>	<i>D</i> $\cdots$ <i>A</i>	<i>D</i> —H $\cdots$ <i>A</i>
O1—H1O $\cdots$ N1	0.84 (1)	1.93 (3)	2.694 (3)	151 (6)
O2—H2O $\cdots$ S1 <sup>i</sup>	0.84 (1)	2.54 (1)	3.365 (2)	170 (4)
N2—H2N $\cdots$ O1 <sup>ii</sup>	0.87 (1)	2.11 (1)	2.950 (4)	162 (3)

Symmetry codes: (i)  $x+1/2, -y-1/2, z+1/2$ ; (ii)  $x, -y, z-1/2$ .

Fig. 1

